



17-19 SEPTEMBER
BANGKOK
THAILAND **2025**

GIFA

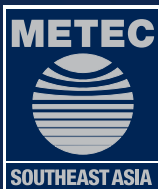
3rd International Foundry Trade Fair
and Forum for Southeast Asia

INVITATION TO EXHIBIT



powered by
The Bright World of Metals

Concurrent exhibition:



Co-located exhibitions:



www.gifa-southeastasia.com

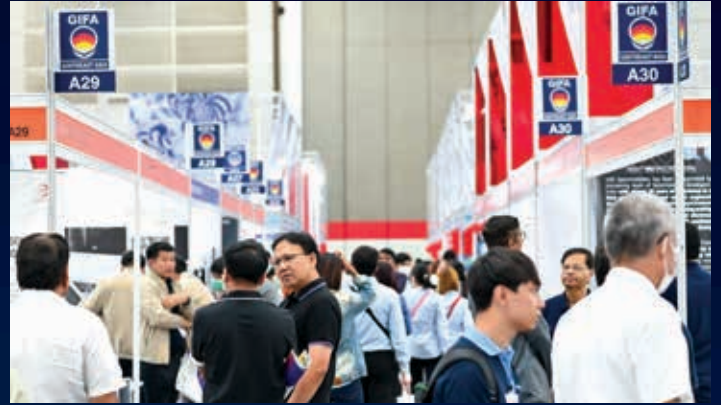


Messe
Düsseldorf
Asia

CONNECT ENTERPRISES, FUELING GROWTH: GIFA SOUTHEAST ASIA 2025

GIFA SOUTHEAST ASIA 2025, a trade fair for specialized foundry systems, beckons global exhibitors to Bangkok, Thailand, at the epicentre of Southeast Asia's manufacturing pulse. A one-stop business platform that offers a prime opportunity to showcase cutting-edge technologies in casting machines, pouring equipment, moulding, core making, and die making.

Step into a new era at GIFA SOUTHEAST ASIA 2025, where the trade fair experience is transformed into an immersive platform for technological advancements and valuable connections. Connect with local distributors, collaborate with leading engineering professionals, and foster partnerships in sectors spanning automotive, construction, precision manufacturing, and more.

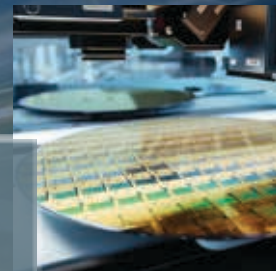


Asia Pacific is leading the world's market with the largest market share at **55.6%** in 2023.



DISCOVERING MARKET OPPORTUNITIES

Global foundry market growth is fuelled by chip demand in mobile devices, high-performance computing, and automotive applications.



Regional Economic Growth

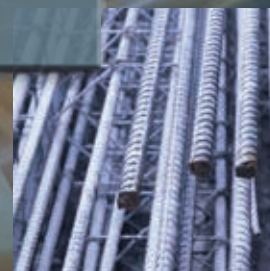
Unique Trends



Highest growth rate in Asia Pacific of all regions in automotive sales and production.



Increased demand for electronic devices, IoT technologies, semiconductors, and renewable energy solutions is driving market growth.



Southeast Asia's industrialization boosts steel casting demand, especially in construction.

EXHIBITING BENEFITS



Market Access

Connect with regional foundry markets and forge new partnerships.



Direct Networking

Engage with key decision-makers for impactful connections.



Technical Showcase

Present your expertise to a global audience on the live stage.



Product Display

Showcase products, respond promptly to buyer inquiries, and speed up sales.



Targeted Sales

Convert quality leads into successful sales with an ideal audience.

EXHIBIT RANGE

GIFA SOUTHEAST ASIA 2025 provides an ideal platform for companies with the following products, services and applications:

- Foundry Plants and Installations, Planning, Construction, Engineering
- Melting Shop
- Refractories Technology
- Metallic Charge Materials
- Moulding and Core Making
- Moulding Sands
- Moulding Sands Preparation and Sand Reclamation
- Moulding Auxiliaries
- Gating and Feeding
- Casting Machines and Pouring Equipment
- Knock-out, Fettling and Finishing
- Surface Treatment
- Welding and Cutting
- Heat Treating and Drying Furnaces
- Transportation and Storage
- Manipulation
- Pattern and Die Making
- Control Systems
- Measurement and Test Technology
- Compressed-air Technology
- Exhaust and Ventilation Technology
- Environmental Protection and Waste Removal
- Industrial Safety and Ergonomics
- Information Processing
- Additive Manufacturing
- Consulting, Design, Service and Engineering
- Technical Publications, Technical Periodicals, Associations
- Training, Further Education



VISITOR PROFILE

The third edition of GIFA SOUTHEAST ASIA 2025 will draw users, suppliers, manufacturers, processors, engineers, technicians, buyers, production managers, sales managers from the following industries:

- Foundries
- Foundry Machinery Supply Industry
- Suppliers of Raw and Auxiliary Materials and Process Materials for Foundries
- Automobile Industry
- Mechanical Engineering Industry
- Iron, Steel and Non-ferrous Metal Industry
- Trade and Commerce
- Services
- Tools, Dies and Moulds Manufacturing



EMBRACING SUSTAINABILITY: The Path to a Greener Metal Industry

As the foundry and metallurgy industries evolve with an increased focus on sustainability, make your mark at GIFA & METEC SOUTHEAST ASIA 2025 by demonstrating your commitment to eco-friendly practices. Showcase cutting-edge renewable energy solutions and waste reduction techniques, putting your latest sustainable innovations and technologies in the spotlight.



ACT NOW!
BOOKING OPEN FOR GIFA SOUTHEAST ASIA 2025.
BOOK YOUR SPACE NOW!

COST OF PARTICIPATION (All standard rates shown; prevailing and additional charges may apply.)

Option A Space Only (min 24 sqm)
SGD 605.00 per sqm

Option B Basic Shell Scheme (min 12 sqm)
SGD 690.00 per sqm

Option C Enhanced Shell Space (min 12 sqm)
SGD 775.00 per sqm

Electrical & Furniture Entitlement

For Basic and Enhanced Shell Schemes

Items	Area : sqm				
	12-17	18-23	24-29	30-35	36-40
Leather Chair	3	6	6	9	9
Lockable Cabinet	1	1	2	2	3
Discussion Table	1	1	2	2	3
Wastepaper Basket	1	1	2	2	3
Spotlight with Arm	3	4	6	7	8
5amp/220V Powerpoint	1	1	2	2	3

Note: No financial credit will be given for any package item not utilised.

Basic Shell Scheme



Enhanced Shell Scheme



Booth visuals for illustration purposes only; actual layout may vary.

All information is correct at the time of printing and is subject to changes. Changes may be required by the organiser, hence the terms contained here cannot form part of an offer or contract.



4 EXHIBITIONS, 1 VENUE

CONNECTING SOUTHEAST ASIA'S METAL INDUSTRY SUPPLY CHAIN

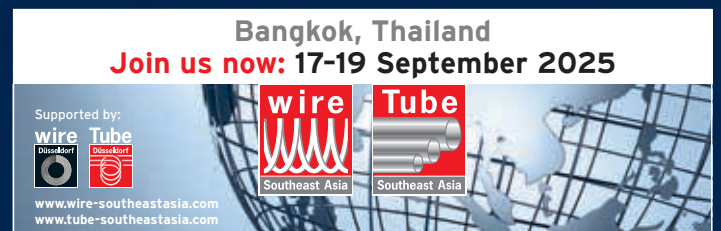
BOOK YOUR BOOTH SPACE NOW!

Contact our team at gifa@mda.com.sg today to explore various participation options!

Concurrent exhibition:



Co-located exhibitions:



Officially supported by:



For enquiries:

Within Thailand:
 Exposit Co., Ltd
 1755/3 Cedar Park,
 Soi Ladprao 94 (Town in Town 11),
 Plubpla, Wangthonglang,
 Bangkok 10310, Thailand
 Tel (66) 2559 0856-8 _ Fax (66) 2559 2893
 info@exposit.co.th

Organized by:

Overseas:
 Messe Düsseldorf Asia Pte Ltd
 3 HarbourFront Place #09-02
 HarbourFront Tower Two
 Singapore 099254
 Tel (65) 6332 9620 _ Fax (65) 6337 4633
gifa@mda.com.sg

